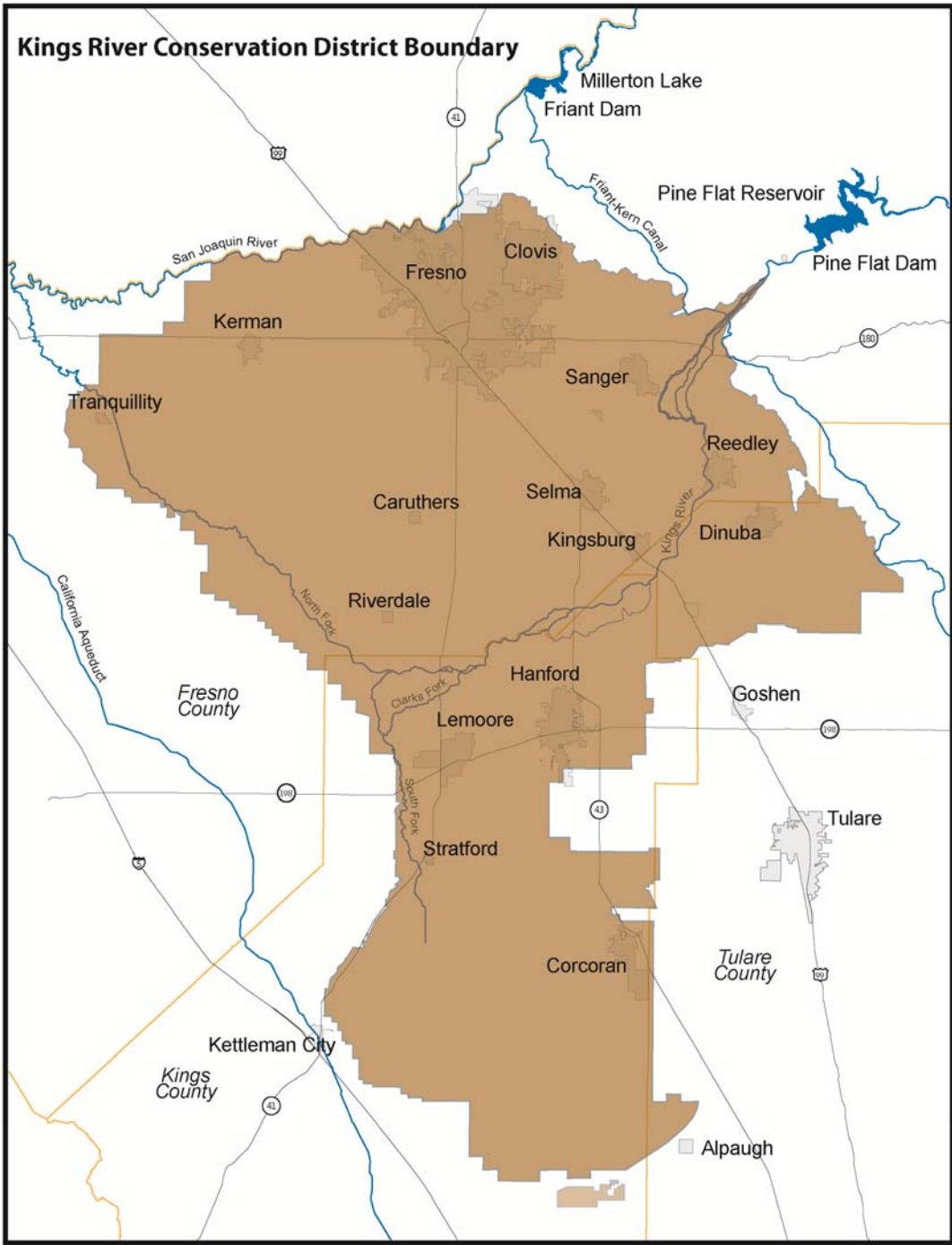




# Groundwater Management Challenges In the Kings Basin

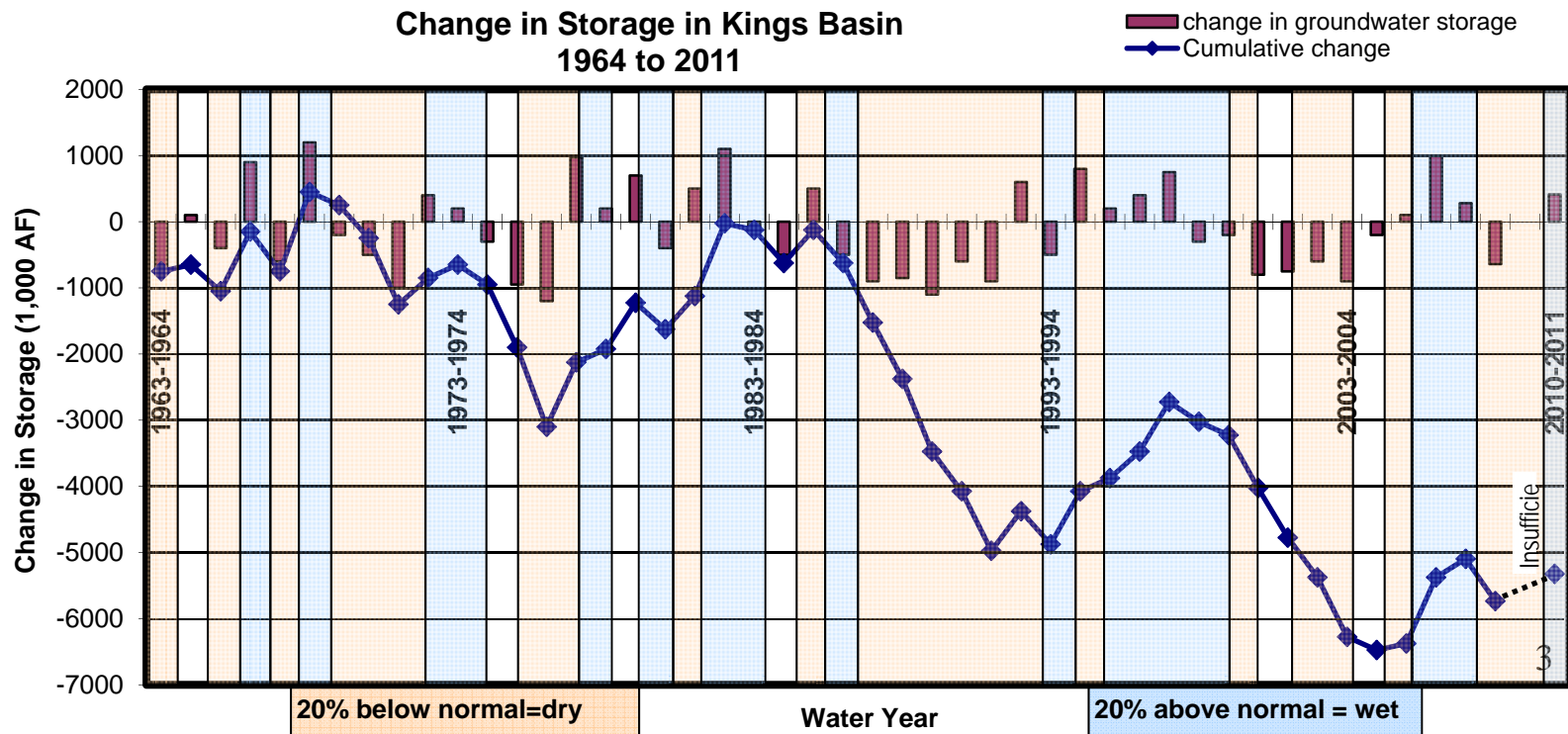
David Orth, General Manager  
Kings River Conservation District

March 27, 2014



# Groundwater Conditions

- Kings Basin Overdraft
  - Regional Supply Characteristics: closed system, conjunctive use basin.
  - Average annual overdraft (1963 to 2009) approx. 120 TAF.
  - Largest GW depression located near Raisin City, beyond the Kings River place of use.





# Conflicting Water Policy Objectives

- Conjunctive Use
- Protection of Water Quality
- Water Use Efficiency
- Floodwater Management
- Environmental Protection



# Innovative Methods for Groundwater Management

- Dual Irrigation Systems
- On-farm Recharge/Floodwater Utilization
- Integration of Resource Planning
  - Multiple policy objectives
- Data
  - Measurement, Modeling, Remote Sensing
- Coordinated Groundwater Management



# Short Term Actions?

- Limited Alternatives – Significant economic impact can not be avoided
- Flexibility
  - In operations of water delivery systems
  - In transfer of water supplies
  - In the way we think