

ESSENTIAL ELEMENT SERIES 7

**RADICAL SURGERY: SAN JOAQUIN
VALLEY HEALTHCARE CAREERS**

MORNING KEYNOTE



OVERVIEW

- ▶ Alcohol Beverage Control Appeals Board
- ▶ Department of Alcohol Beverage Control
- ▶ **Department of Consumer Affairs**
- ▶ California Horse Racing Board
- ▶ Cannabis Control Appeals Panel



THE HEALTH CARE LANDSCAPE IS CHANGING RAPIDLY

- ▶ People over the age of 60 expected to double by 2050
- ▶ Longer lives may not be healthier lives
- ▶ 2.3 million new healthcare workers by 2025
- ▶ **Will we have enough workers to fill these roles?**



NOW, LET'S FOCUS ON CALIFORNIA

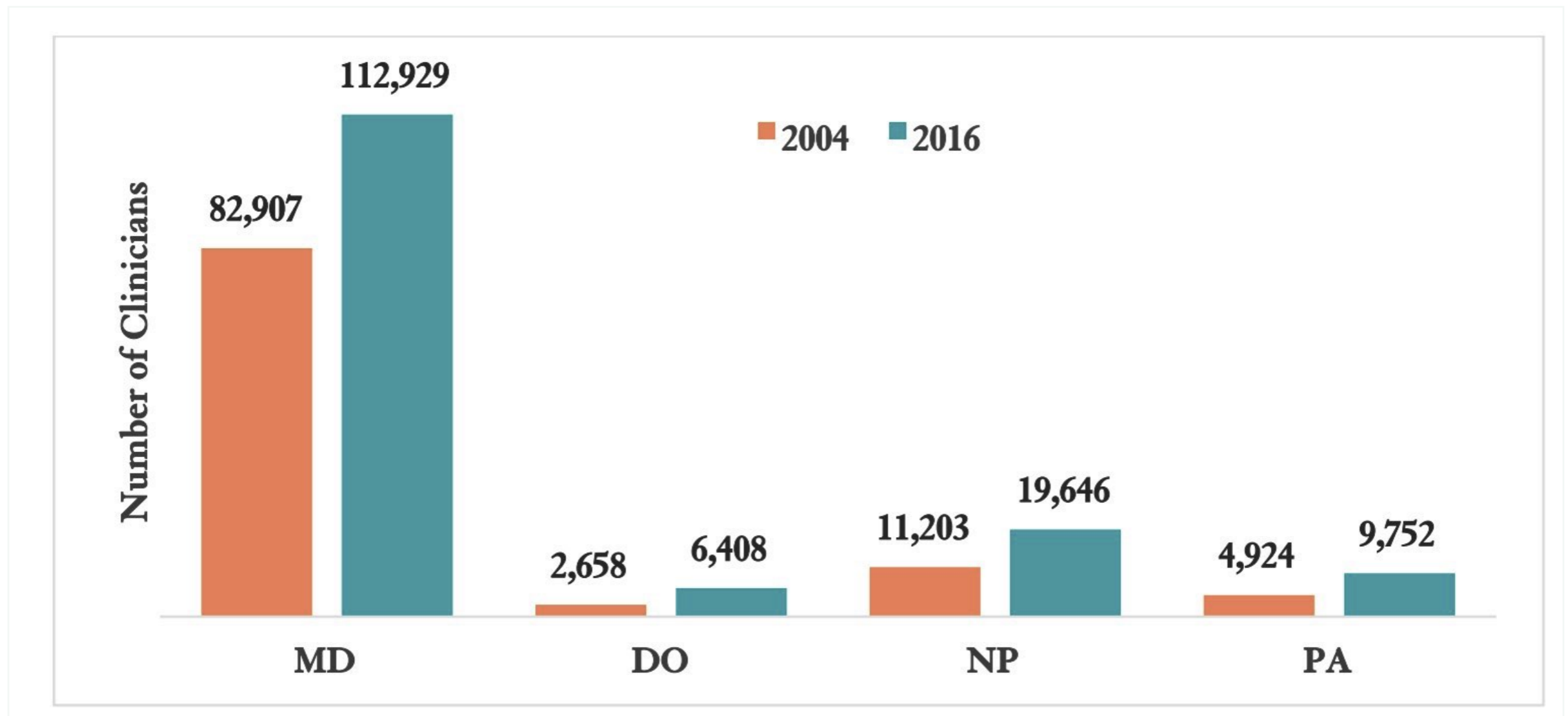
- ▶ Annual report licensing data from DCA programs:

Type	2014	2015	2016	2017
Registered Nursing	414,159	433,551	418,980	432,080
Vocational Nursing	126,674	129,442	122,467	126,043
Psychiatric Technicians	13,414	13,385	11,943	11,743
Registered Dental Assistants	42,550	44,079	44,163	45,299
Respiratory Care Practitioners	22,153	22,801	23,215	23,473



CHANGE IN THE NUMBER OF CLINICIANS BY PROFESSION

Snapshot of California from 2004 to 2016





DEPT OF CONSUMER AFFAIRS - CORE FUNCTIONS

EDUCATION

LICENSING

ENFORCEMENT



BOARD OF REGISTERED NURSING - CLINICAL CAPACITY



EDUCATION

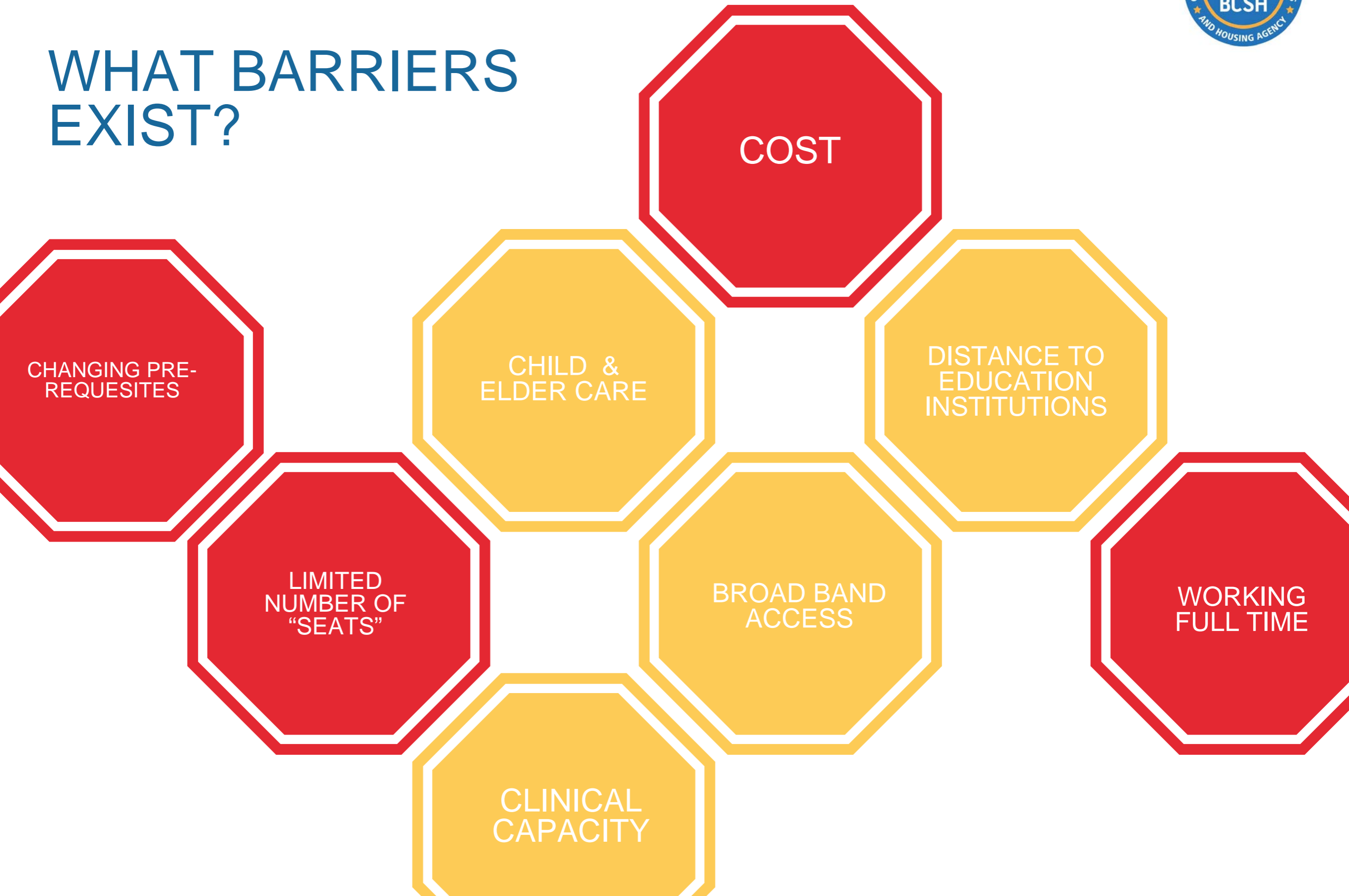


LICENSING



ENFORCEMENT

WHAT BARRIERS EXIST?





WHAT WILL YOU
DO TO CREATE A
BRIGHTER
HEALTHCARE
WORKFORCE?