

Prior Learning Assessment

Scott Campbell

Vice President



Mike McIntyre

President & COO



What is today's norm?

THINK YOU KNOW THE FACTS?
TODAY'S COLLEGE STUDENTS ARE...

BALANCING MULTIPLE RESPONSIBILITIES



THREE-QUARTERS
OF COLLEGE STUDENTS
COMMUTE TO CLASS WHILE JUGGLING PARENTING,
WORKING AND BOTH.

40 PERCENT
ATTEND SCHOOL ONLY
PART-TIME.



STUDENTS WORK ON AVERAGE
19 HOURS
PER WEEK



ABOUT
40 PERCENT
OF COMMUNITY-COLLEGE STUDENTS
WORK 20 OR MORE HOURS
PER WEEK.

FINANCIALLY SUPPORT THEMSELVES... AND OFTEN STRUGGLE TO MAKE ENDS MEET



ALMOST HALF OF
TODAY'S STUDENTS
ARE ON THEIR OWN FINANCIALLY. HALF
OF THOSE STUDENTS (25%) HAVE
FINANCIAL DEPENDENTS OF THEIR OWN.

4.8 MILLION
POSTSECONDARY STUDENTS ARE PARENTS,
AND OF THOSE, **61 PERCENT** HAVE NO
MONEY TO CONTRIBUTE TO THE COST
OF COLLEGE.



88 PERCENT
OF SINGLE STUDENT-PARENTS HAVE
INCOMES **BELOW 200 PERCENT** OF
THE POVERTY LINE.

OLDER AND MORE RACIALLY DIVERSE



38 PERCENT
OF ALL TODAY'S UNDERGRADUATES
ARE OLDER THAN 25.

THE VISION THAT MOST OF US HAVE OF
COLLEGE STUDENTS - 18- TO 21-YEAR-OLDS
WHO ATTEND SCHOOL FULL-TIME - ONLY
MAKE UP ABOUT A THIRD OF THE
COLLEGE POPULATION.



ENROLLMENT AMONG
HISPANIC STUDENTS
TRIPLED
SINCE THE MID-1990'S,



AND BLACK STUDENT
ENROLLMENT GREW BY
72 PERCENT.

AND THOSE TRENDS ARE EXPECTED TO CONTINUE THROUGH 2021, WITH BLACK ENROLLMENT PROJECTED TO GROW BY **25 PERCENT**, HISPANIC STUDENTS PROJECTED TO INCREASE BY **42 PERCENT**, AND ONLY A **4 PERCENT** INCREASE IN WHITE STUDENTS FORECASTED.

LESS LIKELY TO GRADUATE

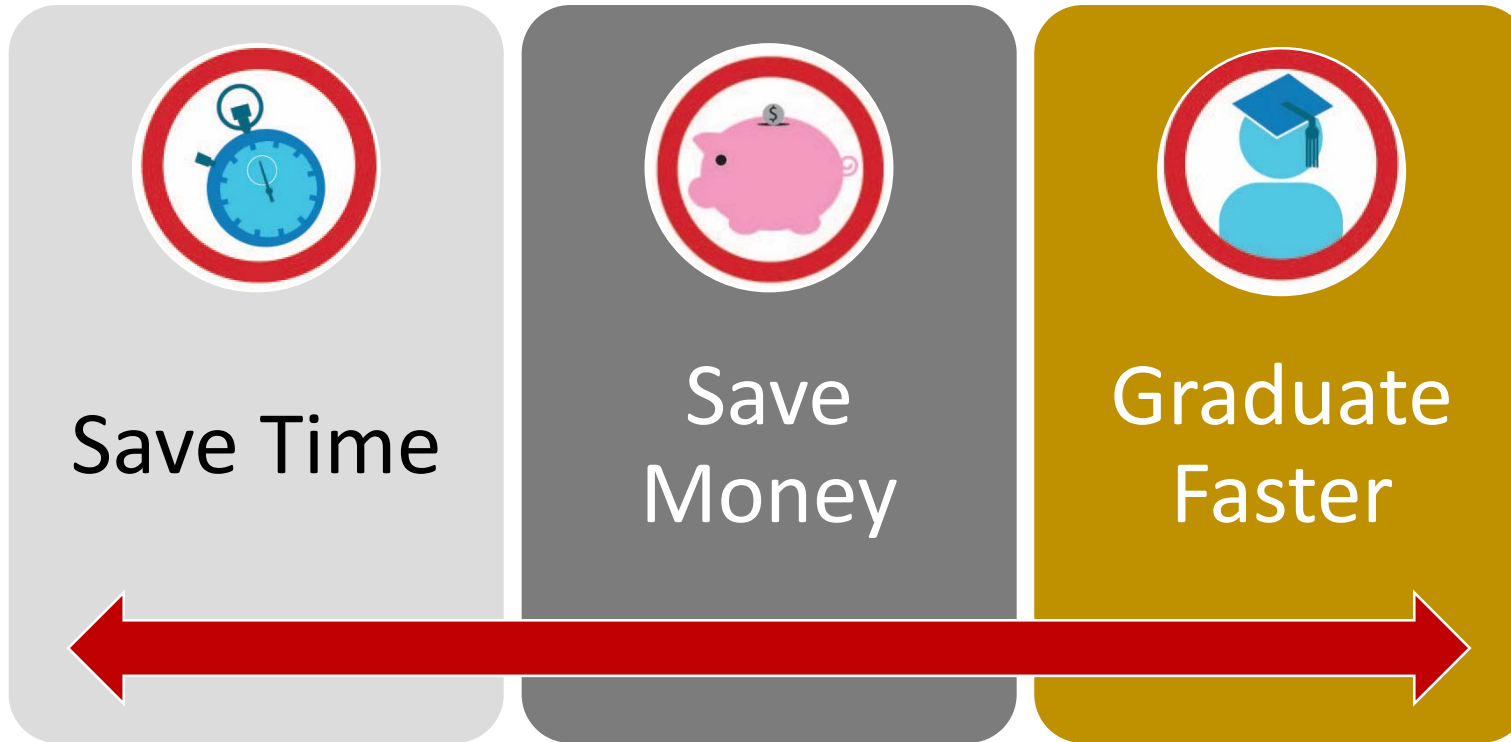


STUDENTS WITH ADDITIONAL FINANCIAL,
WORK AND FAMILY OBLIGATIONS ARE
TWICE AS LIKELY
TO DROP OUT OF SCHOOL
IN THEIR FIRST YEAR AS STUDENTS
FRESH OUT OF HIGH SCHOOL -
38 PERCENT COMPARED TO **16 PERCENT**.



NO MORE THAN
A QUARTER OF
PART-TIME STUDENTS
MAKE IT TO GRADUATION, EVEN WHEN
GIVEN **TWICE AS LONG** TO COMPLETE.

PLA Helps Students

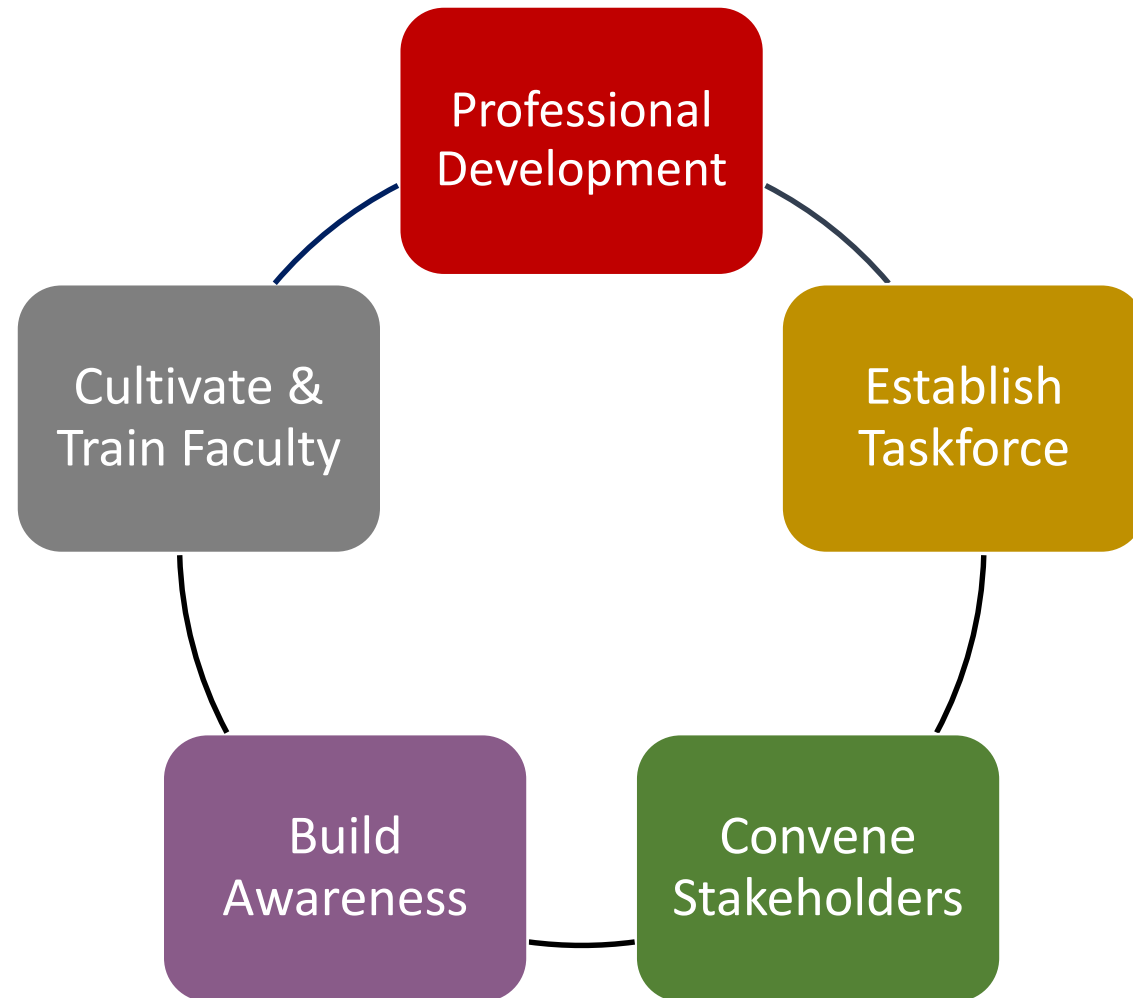


Benefits of PLA to Colleges

- **Increased enrollments**
 - You offer what students want!
- **Increased student persistence**
 - More options keeps students enrolled!
- **Increased graduation rates**
 - Students who stay GRADUATE!



Comprehensive Approach

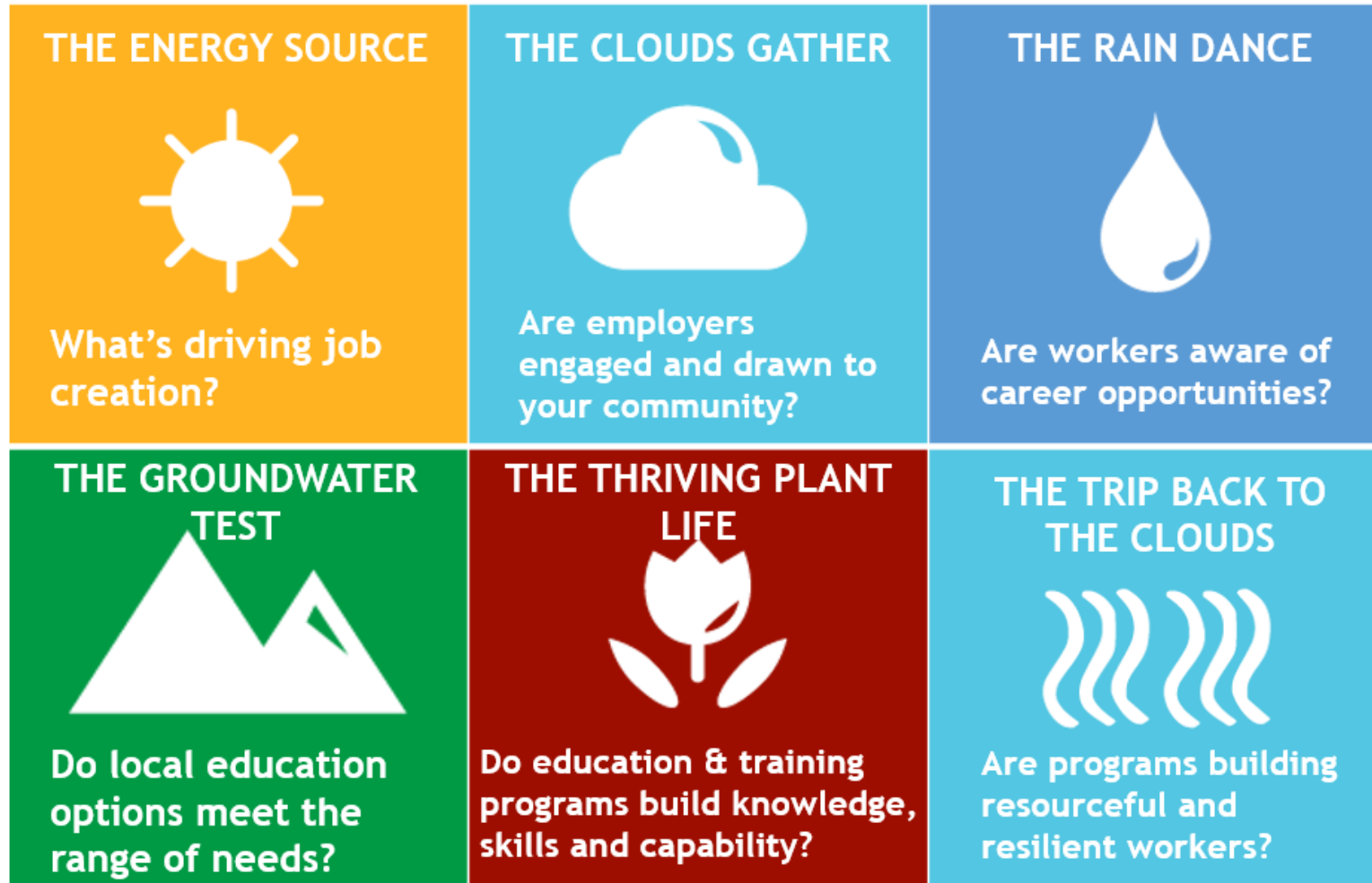


What Works Best?

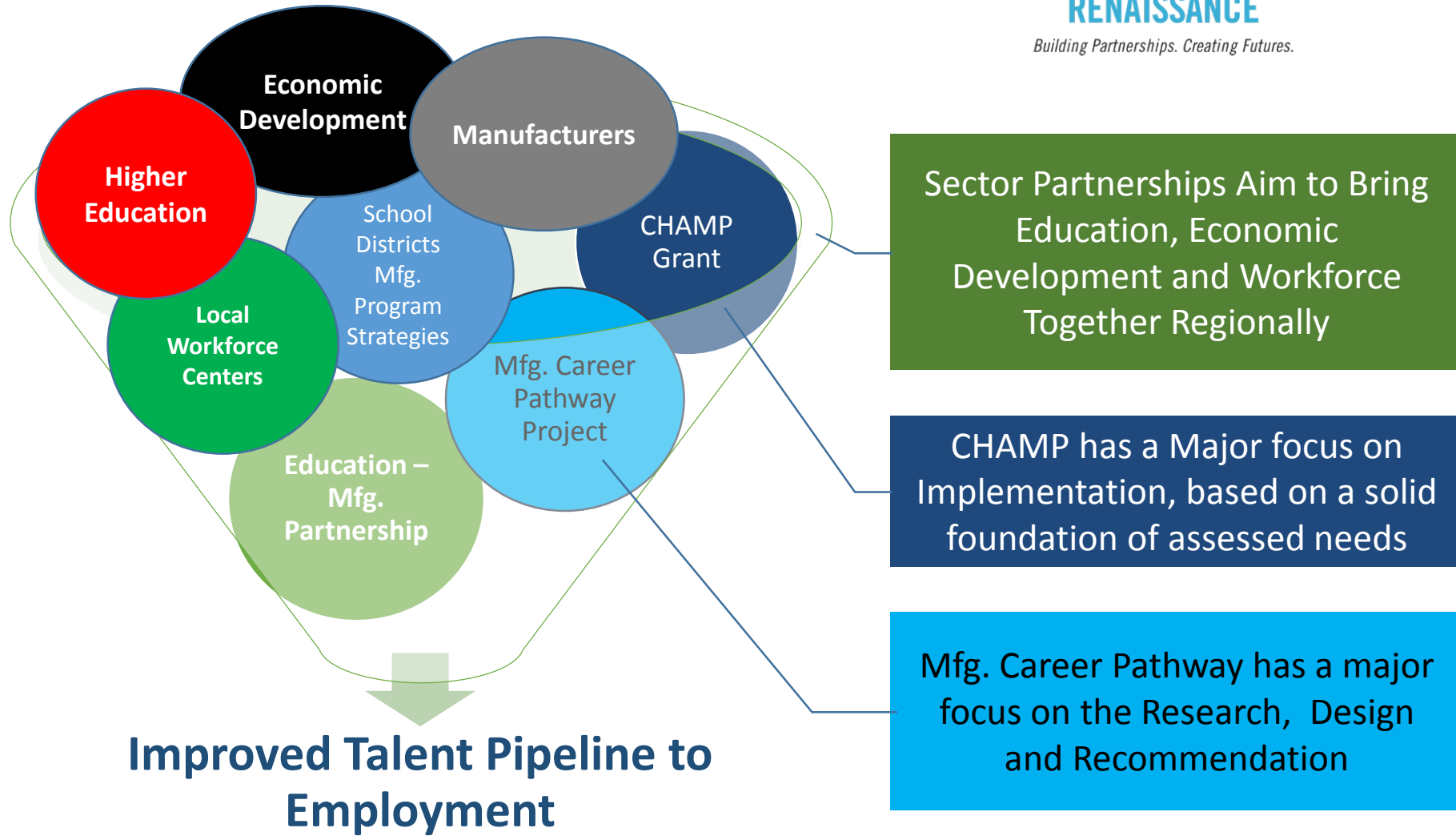
- **PLA Assessment Survey**
- **PLA Implementation Training**
- **Advising Adult Learners**
- **PLA Rubric Development**
- **Faculty Assessor Training**



Talent Ecosystem; Education & Workforce



Regional Collaboration



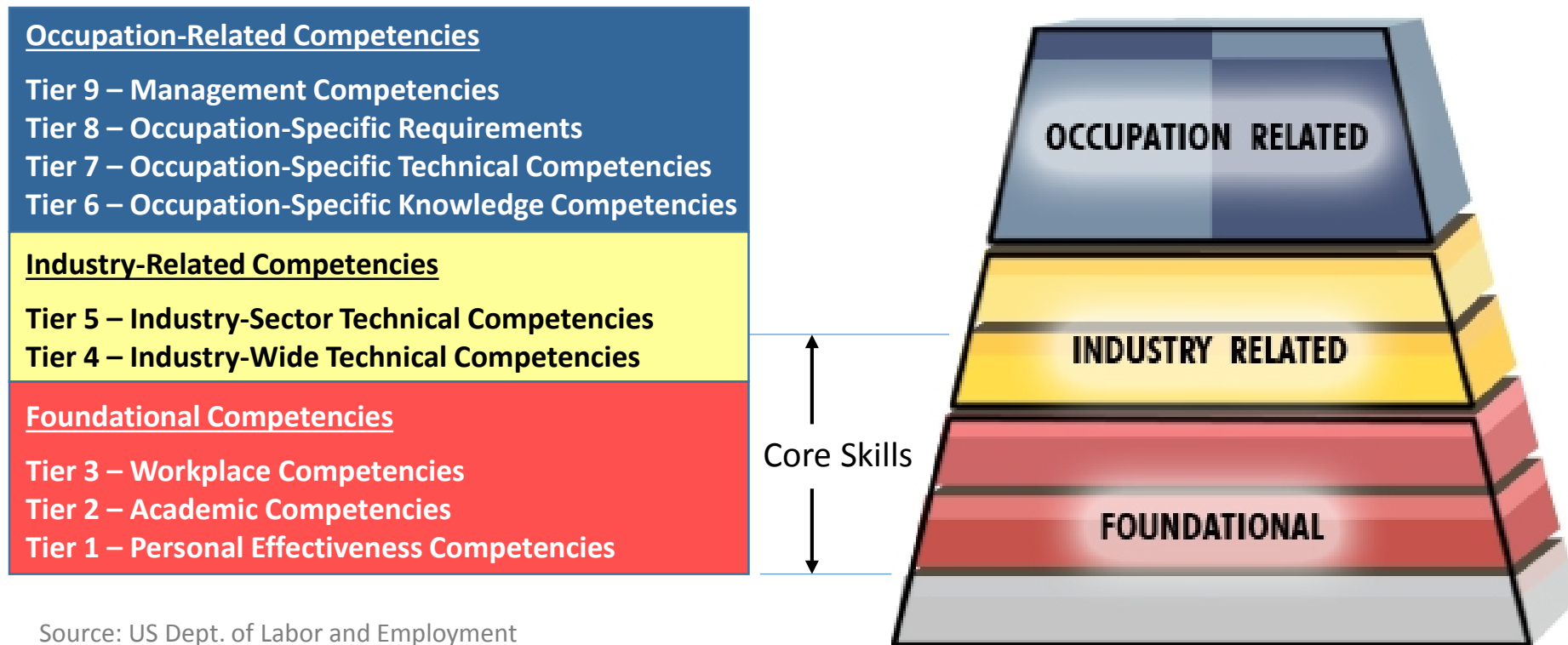
Manufacturing Career Pathway aka The Talent Pipeline

- **The Colorado Manufacturing Career Pathway is:**
 - A series of connected education and training options
 - Provides Support Services
 - Seeks to help individuals obtain
 - Industry validated skills
 - Industry certifications
 - Ultimately leading to manufacturing employment
- **The pathway includes:**
 - Middle school (*8th grade*)
 - Secondary
 - Postsecondary levels
 - Adult education



Industry Occupations Model of Competencies - Industry Driven

- The Mfg. Career Pathway Project utilizes this model
- Current Assessment Surveys Seeks Validation up Through Tier 4
- Follow-on surveys or meeting will assist in definitions for Tiers 5-9



Source: US Dept. of Labor and Employment



Not All Learning Takes Place in the Classroom

CollegeCredit **FastTrack** About How It Works Participating Colleges Other Options ▾ Sign In

EXPERIENCE COUNTS.

GET THE CREDITS YOU DESERVE.

Attention: If you have been affected by recent school closures, Pennsylvania's community colleges are ready to help. To find information on transfer options at your local community college, [click here](#).

It's your life, get the college credits you've earned.

College Credit FastTrack is dedicated to assisting current and prospective students in obtaining college credit at one of Pennsylvania's Community Colleges based on prior work or life experience. Credit can be awarded for knowledge gained while living your life... whether it be by working, participating in employer sponsored training programs, military service, independent study, community service, volunteering or even completing open source courseware.

[Learn More](#)



PLA Platform

1. Provides prospective and current students a site explaining Prior Learning Assessment, the process and how they might benefit.
2. Provides a work flow connecting the student, advisor and assessor involved in the PLA process.
3. Utilizes the institution's own faculty to do the assessments
4. Provides the ability to upload the artifacts (text files, scanned images, video, etc.) to support a petition to receive academic credit for prior learning.
5. Provides reporting and metrics on the PLA activities within the District.
6. Helps to standardize the practices and processes across the institutions.



Process from the Student's View

Explore PLA options

Submit eligibility request

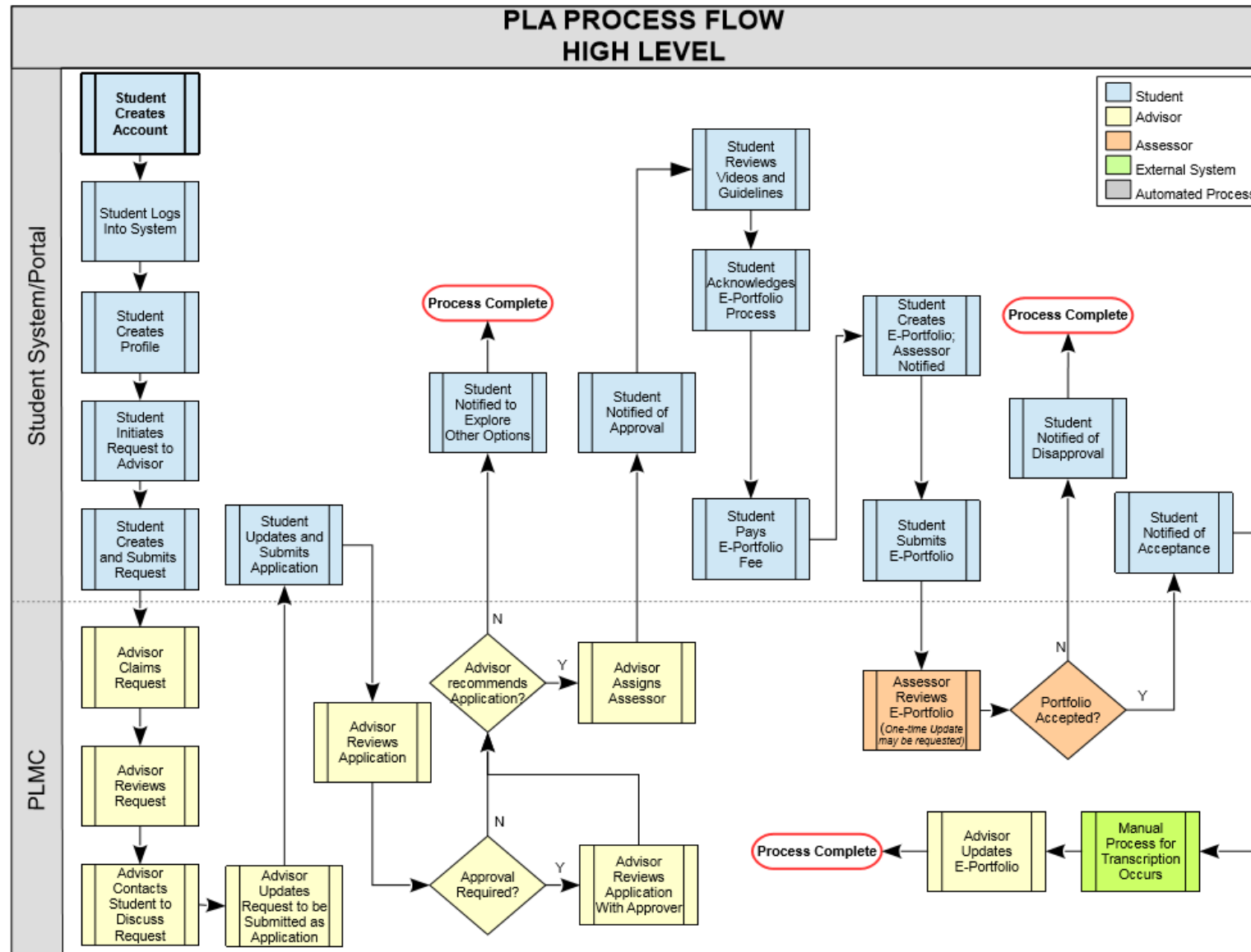
Submit petition for PLA

Create Portfolio

Portfolio is assessed



Workflow to Manage the PLA Process



The information in this document is proprietary and confidential. No part of this document may be disclosed in any manner to a third party without prior written consent.

Real-time Reporting

CollegeCredit **FastTrack** Resources Admin Dashboard Marcy Advisor

Student Details Report - With Petitions

0 New Notifications

- MC3-8445 - You are no longer assigned to this application
6 days ago
- MC3-8471 - Request is ready to claim
21 days ago
- MC3-8445 - Payment complete; e-portfolio is in progress
22 days ago

View All Notifications

Student Details Report - With Petitions

CollegeCredit **FastTrack**

Montgomery County Community College

Name	Age	Contact	Military Service	Currently Enrolled	Student ID	Program of Study	Registration Date
Sonali Chaddha	0	sinamdar2013+student0809@gmail.com 6102918734 x917	Yes	Yes	1234567	Accounting Certificate	08/09/2016
Mike McIntyre	65	mrmcpez@gmail.com 4843187100 x302	No	Yes	1234567	MATHEMATICS (A.A.)	08/04/2016
David Hollister	27	demoplaa1+student@gmail.com 8005551234	No	Yes	8884449	BUSINESS ADMINISTRATIO N (A.S.)	07/29/2016
Sonali Inamdar	0	sinamdar2013+studentstage0726@gmail.com 8883339999 x999	Yes	Yes	9998888	ACCOUNTING (A.A.S.)	07/26/2016
Sonali Inamdar13572345689012345680	0	sinamdar2013+student0630again3@gmail.com 2221114444 x999hii	Yes	Yes	7777777	Addictions Certificate	06/30/2016



Multi-institutional platform

CollegeCredit / *FastTrack*

Pennsylvania Community College System



Public 2-yr and 4-yr institutions

