



United States Department of Agriculture
Rural Development



essential elements



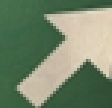
WEST HILLS
COMMUNITY COLLEGE DISTRICT



Ag Tech

The Future

NEXT EXIT



Robert Tse
Coalinga, CA
November 2, 2016



Global Demand Drivers to 2050

- **Global Population Increase**
- **Rapid Urbanization**
- **Growing Middle Class**
- **Climate Change Impact**



- **Rising Food Prices**
- **Rising Global Trade of Food**
- **Rising Demand for Protein, Fruits and Vegetables**
- **Agriculture Adapts to Climate Change**



Disruptive Events

DROUGHT

Invasive Species

Shrinking Farm Labor Pool



Disruptive Events

A photograph of an astronaut in a white space suit floating in the void of space. The Earth is visible in the background, showing green landmasses and blue oceans. A bright blue light source, possibly the sun, is visible on the left side of the frame, creating a lens flare effect.

Disruptive Technology

Regulations



United States Department of Agriculture
Rural Development





Platform for Rural Prosperity

RURAL BROADBAND

NEW AGRICULTURE TECHNOLOGY

PRODUCTION

WATER

ENERGY

ENVIRONMENT

FOOD SAFETY

RURAL TELE-HEALTH / TELE-MEDICINE

Distance Learning

Public Libraries

TRANSPORTATION & LOGISTICS

PUBLIC SAFETY - FirstNet

DIRECT MARKET ACCESS TO GLOBAL MARKETS

Rural Agro Tourism & Recreation